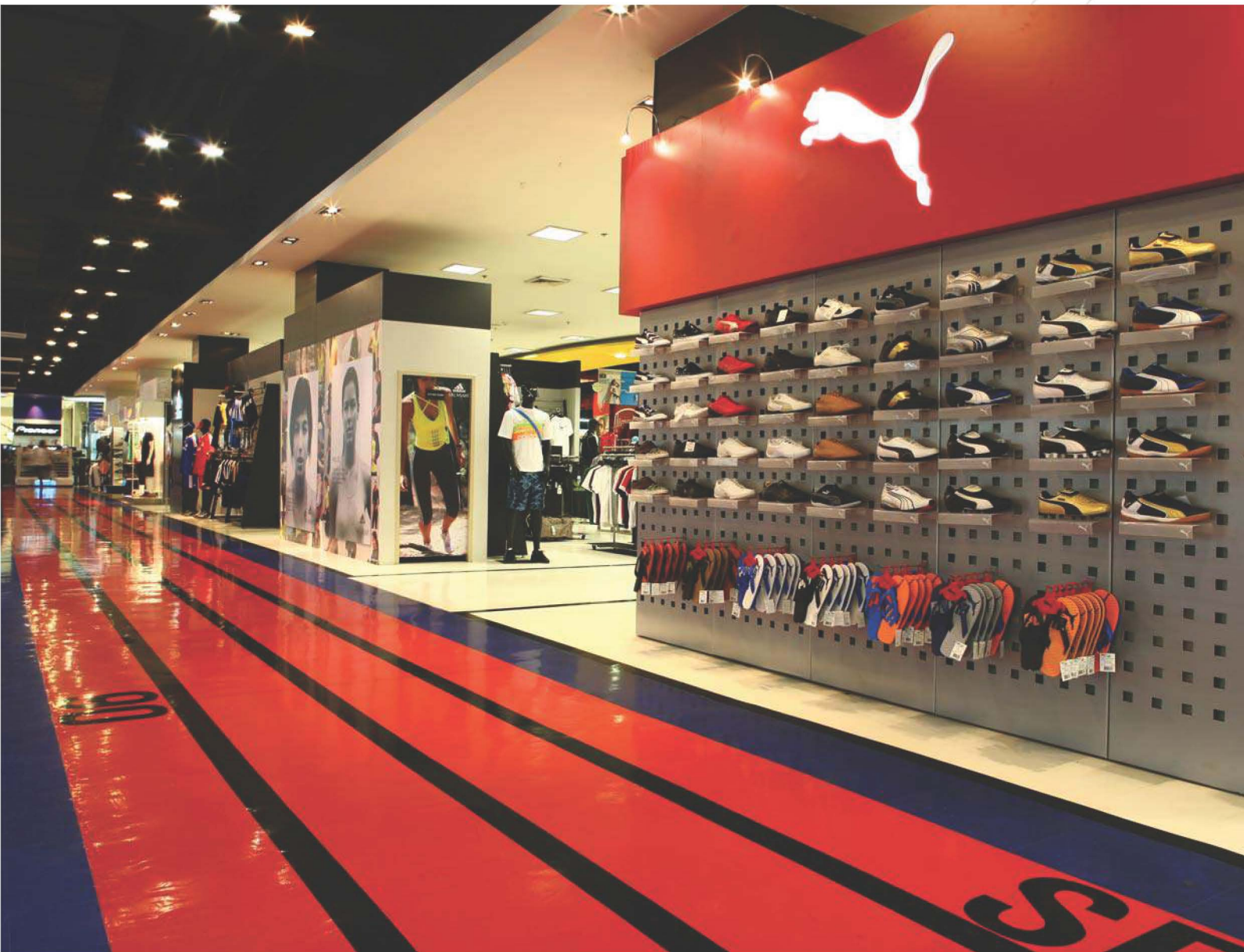


EXCELLENT & STARFLOR

HOMOGENEOUS FLOORING



EXCELLENT

HOMOGENEOUS FLOORING

SIZE
457.2 X 609.6 MM.



THICKNESS
2.0* MM.

- HOMOGENEOUS FLOOR COVERING IN TILE FORM WITH PLAIN COLOR DESIGN PRODUCED BY HIGH PRESSURE IMPACT PROCESS
- AWARDED WITH THAILAND GREEN LABEL (TGL-71/2-12 PLASTIC FLOOR COVERING)
- ENVIRONMENTAL FRIENDLY WITH NON-PHTHALATE PLASTICIZER
- MINIMUM DETRIMENTAL IMPACT ON THE ENVIRONMENT IN COMPARISON WITH OTHER PRODUCTS SERVING THE SAME FUNCTION
- PUR ACTIVE WITH MICRO SILICA REINFORCED ENHANCES PERFORMANCE AND DURABILITY
- 100% RECYCLABLE



TREATMENT
PUR ACTIVE



TYPE
TILE (RECTANGLE)

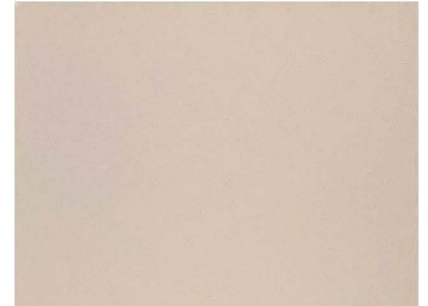
* MADE TO ORDER



G-515



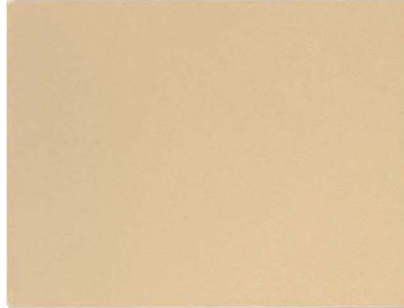
G-516



G-501



G-525



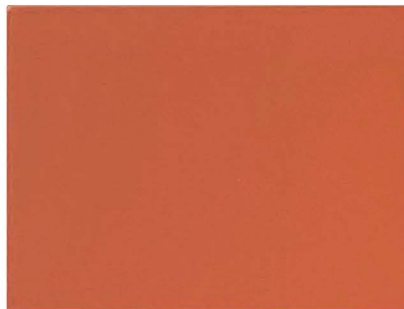
G-585



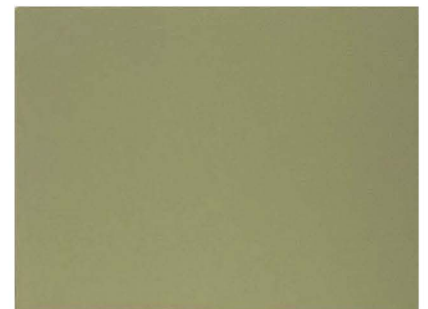
G-511



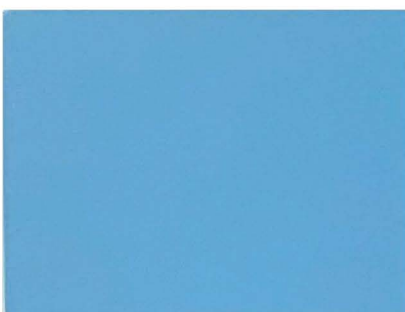
G-535



G-527



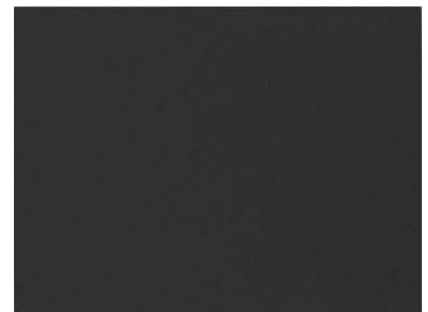
G-539



G-571



G-517



G-523

PLACE RECOMMENDED

HOUSING, OFFICE ADMINISTRATION, EDUCATION, RETAIL

SHADE AND COLOR MAY VARY SLIGHTLY FROM ACTUAL TILES. PLEASE REQUEST ACTUAL SAMPLE FROM MARKETING & SALES DEPARTMENT

STARFLOR

HOMOGENEOUS FLOORING

SIZE
457.2 X 609.6 MM.



THICKNESS
2.0* MM.



TREATMENT
PUR ACTIVE



TYPE
TILE (RECTANGLE)

- HOMOGENEOUS FLOOR COVERING IN TILE FORM WITH MARBLING DESIGN PRODUCED BY HIGH PRESSURE IMPACT PROCESS
- AWARDED WITH THAILAND GREEN LABEL (TGL-71/2-12 PLASTIC FLOOR COVERING)
- ENVIRONMENTAL FRIENDLY WITH NON-PHTHALATE PLASTICIZER
- MINIMUM DETRIMENTAL IMPACT ON THE ENVIRONMENT IN COMPARISON WITH OTHER PRODUCTS SERVING THE SAME FUNCTION
- PUR ACTIVE WITH MICRO SILICA REINFORCED ENHANCES PERFORMANCE AND DURABILITY
- 100% RECYCLABLE

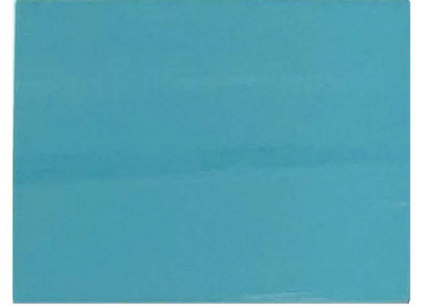
* MADE TO ORDER



G-11



G-15



G-70



G-85



G-35



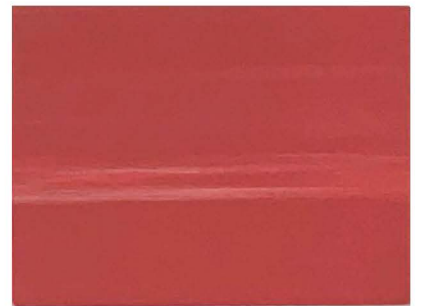
G-74



G-17



G-39



G-27



G-23



PLACE RECOMMENDED
HOUSING, OFFICE ADMINISTRATION, EDUCATION, RETAIL

SHADE AND COLOR MAY VARY SLIGHTLY FROM ACTUAL TILES. PLEASE REQUEST ACTUAL SAMPLE FROM MARKETING & SALES DEPARTMENT

**STARFLEX
EXCELLENT & STARFLOR
(NON-PHTHALATE PRODUCT)
TECHNICAL DATA**

DESCRIPTION			EXCELLENT	STARFLOR
Total thickness	ISO 24346	Nominal value +0.15 mm / -0.10 mm	Pass 2.0 mm +0.04 mm	Pass 2.0 mm +0.04 mm
Weight	ISO 23997	Nominal value +13 % / -10 %	Pass 4,062 g/m ² +0.7 %	Pass 4,040 g/m ² +0.3 %
Size Side length	ISO 24342	Deviation ≤ 0.13 % of nominal length up to 0.5 mm maximum	Width 457.2 mm Length 609.6 mm	Width 457.2 mm Length 609.6 mm
Squareness and straightness	ISO 24342	> 400 mm : ≤ 0.35 mm > 400 mm : ≤ 0.35 mm	Pass 0.20 mm Pass 0.10 mm	Pass 0.10 mm Pass 0.00 mm
CLASSIFICATION				
Product specification	ISO 10581	-	Homogeneous poly (vinyl chloride) floor coverings	Homogeneous poly (vinyl chloride) floor coverings
European classification	ISO 10874	-	33 - 42	33 - 42
PERFORMANCES				
Type Binder content	ISO 10581	-	Type III	Type III
Dimensional stability	ISO 23999	≤ 0.25 %	Pass MD 0.15 % Pass AMD 0.05 %	Pass MD 0.05 % Pass AMD 0.00 %
Residual indentation	ISO 24343-1	≤ 0.1 mm	Pass 0.04 mm	Pass 0.05 mm
Flexibility	ISO 24344, Method A	Test using 20 mm mandrel product show no further cracking	Pass 20 mm mandrel no cracking	Pass 20 mm mandrel no cracking
Effect of castor chair	ISO 4918	After 25,000 cycles, no delamination shall occur. No disturbance to the surface other than a slight change in appearance	Pass No visible change	Pass No visible change
Colour fastness	ISO 105-B02	6 minimum	Pass > 6	Pass > 6
Surface treatment	-	-	PUR ACTIVE	PUR ACTIVE
Effect of stains	ISO 26987	-	Excellent	Excellent
ENVIRONMENT / INDOOR AIR QUALITY				
TVOC after 7 days	ISO 16000-6	< 0.4 mg/m ³ .h	Pass 0.0409 mg/m ³ .h	Pass 0.0342 mg/m ³ .h



14, 16 SOI NGAMVONGWAN 2 YAEK 5, BANGKHEN,
MUANG NONTABURI, NONTABURI 11000 THAILAND
TEL: +66-(0) 2580-0620, (0) 2951-0710-4
FAX: +66-(0) 2580-4557, (0) 2951-0718
SALES@STARFLEXTILE.COM, EXPORT@STARFLEXTILE.COM
WWW.STARFLEXTILE.COM